

# Challenges for Low Carbon Technology Support in Europe: Lessons from existing experiences



Vlasis Oikonomou

JIN Climate and Sustainability



4<sup>th</sup> POLIMP Stakeholders Workshop

Berlin, 16 September 2015

Much information is already available for climate policy stakeholders but the way the information is presented is often:

- ❖ difficult to access
- ❖ not in the right format
- ❖ of limited use for stakeholders.

*Acronym:* POLIMP

*Title:* Mobilizing and Transferring Knowledge  
on Post-2012 Climate Policy Implications

*EC funding:* 1.0 Million€

*Start date:* 1<sup>st</sup> of May 2013

*Duration:* 3 years

JOINT IMPLEMENTATION NETWORK  
(JIN) - *Netherlands*



CENTRE FOR EUROPEAN POLICY STUDIES  
(CEPS) - *Belgium*



UNIVERSITY OF PIRAEUS RESEARCH CENTER  
(UPRC) - *Greece*

UNIVERSITAET GRAZ  
(UNI GRAZ) - *Austria*



ECOLOGIC INSTITUT Gemeinnützige GmbH  
(ECOLOGIC) - *Germany*

CLIMATE STRATEGIES LBG  
(Climate Strategies) - *United Kingdom*

FUNDACJA NAUKOWA INSTYTUT BADAN STRUKTURALNYCH  
(IBS) - *Poland*

# We aim at identifying

- ❖ where knowledge gaps exist
- ❖ what future international climate policy directions may look like and...
- ❖ what these imply for policy and decision makers internationally and within the EU.

# Project Objectives (1/2)



**Identify knowledge gaps on the implications for EU stakeholders of possible directions of climate policy making.**

**Collect and synthesize knowledge of possible climate policy directions and their implications.**



**Support policy and decision makers in taking well informed decisions, thereby reducing uncertainties and mitigating the risk.**

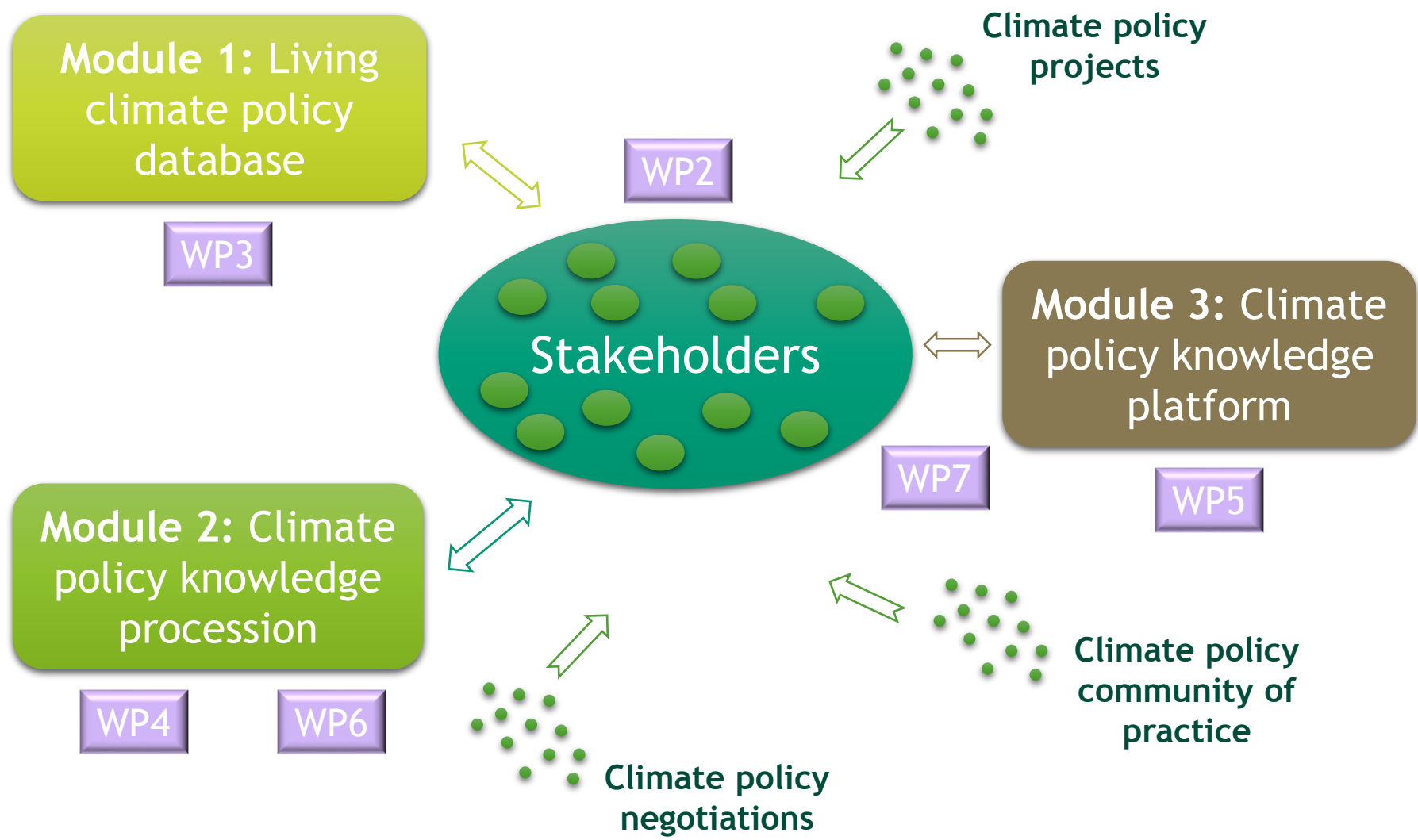
# Project Objectives (2/2)

Facilitate communication among various research components and knowledge dissemination among various stakeholder groups.



Track down links between the outcome of the UNFCCC negotiations and EU-level and domestic policy actions in selected country-parties.

# Work Modules





# Climate Policy Info Hub



About Contact

## CLIMATE POLICY INFO HUB

Scientific Knowledge for Decision-Makers



### Household Contribution to Buildings' Carbon Footprint

Fotolia © Brian Jackson

Households remain one of the most significant contributors to greenhouse gas emissions from the building sector, due to their energy consumptions, with certain Member States having thrice or more the household emission footprint than others. The efforts carried out to minimize their emissions have brought certain results, but more actions are considered necessary. Improvement of households' energy efficiency is a key parameter in this respect.

parameters in this respect  
actions are considered necessary: improvement of households' energy efficiency is a key  
efforts carried out to minimize their emissions have brought certain results, but more  
Member States having thrice or more the household emission footprint than others. The  
emissions from the building sector' due to their energy consumptions' with certain  
households remain one of the most significant contributors to greenhouse gas

## Issues & Sectors

### Issues

- Adaptation
- Energy Efficiency
- EU Climate Policy
- International Climate Policy
- Emission Trading
- Renewable Energy

### Sectors

- Agriculture
- Energy
- Household
- Industry
- Land Use, Urban and Forestry
- Transport

**20 Articles online**

## CLIMATE POLICY INFO HUB

Scientific Knowledge for Decision-Makers

### Are Transport Emissions "Mobilizing" an EU Policy Response?



Within the EU-28, transport is responsible for around 20% of greenhouse gas emissions, rendering it the second largest emitting sector after the energy industry. Emissions from transport have also grown by 19% from 1990 to 2011. In order to turn this trend around and accomplish the corresponding emission targets, the EU has designed and implemented a series of measures, including the defining of manufacturing standards.

#### Sources

1. United States Environmental Protection Agency (EPA) website, <http://www.epa.gov/climatechange/ghgemissions/sources/transportation.html#>
2. Global Transportation Energy and Climate Roadmap. The impact of transportation policies and their potential to reduce oil consumption and greenhouse gas emissions. The International Council on Clean Transportation (ICCT), 2012.
3. European Commission, [http://ec.europa.eu/clima/policies/transport/index\\_en.htm#](http://ec.europa.eu/clima/policies/transport/index_en.htm#)
4. Eurostat, Energy, transport and environment indicators. Pocketbook ISSN 1725-4566 2013
5. European Environment Agency, <http://www.eea.europa.eu/themes/transport/intro#>
7. White Paper Roadmap to a Single European Transport Area - Towards a competitive and resource efficient transport system. European Commission, 2011.
8. Communication from the Commission to the Council and the European Parliament, "Results of the review of the Community Strategy to reduce CO2 emissions from passenger cars and light-commercial vehicles", COM(2007) 19 final, Brussels, 7.2.2007.

Creation of a thematic knowledge base on climate change mitigation, adaptation, technology transfer, finance and market mechanisms.



The knowledge collection and processing network will **enhance the insights** of policy and decision makers on possible courses of international climate policy making.

Reduction of the uncertainty of policy and decision makers and better understanding of the consequences of different policies and climate regimes.



Trust among policy and decision makers so that they can strengthen their efforts for implementation of the ‘Climate and Energy package (20/20/20 targets)’.

The workshop brings together the main messages gathered from engagement with stakeholders in many EU Member States under the POLIMP project and unites three themes

1. Financing for low carbon technology - the renewable energy example
2. Public acceptance of technology options - managing risks
3. Role of Emissions Trading in low carbon technology deployment

The workshop aims to provide policy makers and researchers, in view of the COP21 in Paris, with an opportunity to better understand the perception of various stakeholder groups through the knowledge collected in POLIMP. It also aims to exchange concerns from the policy and scientific community on the three topics under the umbrella of ‘low carbon technology support policies in Europe’

## Session I: Financing for low carbon technology – the renewable energy example

*Chair: Matthias Duwe, Ecologic Institute*

Overview of EU Renewables support instruments and insights from stakeholders  
Andreas Tuerk, University of Graz

*In response:* Europe's key challenges for moving forward on renewables  
Rainer Hinrichs- Rahlwes, VP, European Renewable Energies Federation (EREF)

*Discussion*

## Session II: Public Acceptance of technology options – managing risks

*Chair: Christina Lucha, Ecologic Institute*

Overview on public acceptance of renewables and insights from stakeholders  
Erwin Hofhman, JIN

*In response:* German experiences with engaging public support for renewables  
Anja Kollmuss, *CAN-Europe* (confirmed)

Comments  
Tina Löffelsend, Head of National energy and climate policy, Friends of the Earth Germany (BUND)

*Discussion*

## Session III: The future role of emissions trading for technology support

*Chair: Henry Derwent, Climate Strategies*

Overview on the state of the EU ETS and stakeholder positions on its future role, incl. future technology deployment and innovation

Matthias Duwe, Ecologic Institute & Noriko Fujiwara, CEPS

*In response:* The role of the EU ETS in German energy and climate policy – a Ministry perspective

Stefanie Neveling, Federal Ministry for Economic Affairs and Energy. Division “Energy policy issues in emissions trading”

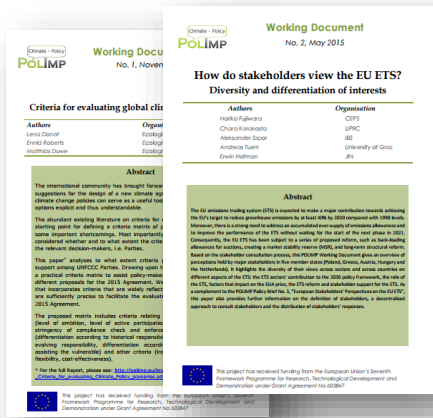
### *Discussion*

Summary and outlook: thoughts on a smart EU policy mix for low carbon technology

Benjamin Görlach, Head of Economic Instruments & Policy Evaluation, Ecologic

✓ **Policy Brief Series:**

- 1<sup>st</sup> POLIMP Policy Brief on Public Acceptance “Acceleration of Clean Technology Deployment within the EU: The Role of Social Acceptance”
- 2<sup>nd</sup> POLIMP Policy Brief “Financing Renewable Energy for Europe: The way forward”
- 3<sup>rd</sup> POLIMP Policy Brief “European Stakeholders’ Perspectives on the EU ETS”



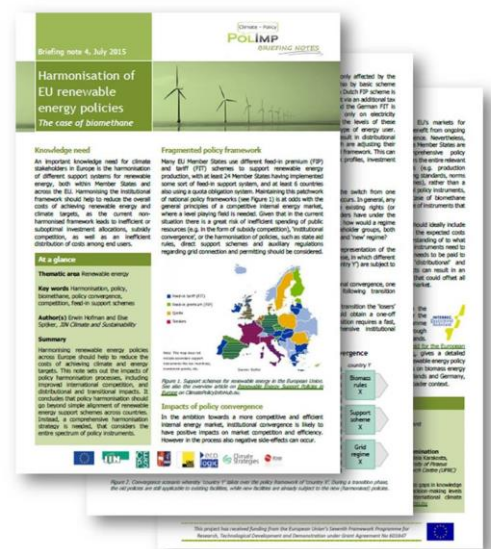
✓ **Working Document Series:**

- POLIMP Working Document Series No.1 “Criteria for evaluating global climate regime scenarios”
- POLIMP Working Document Series No.2 “How do stakeholders view the EU ETS”



✓ **POLIMP Briefing Notes:**

- 1<sup>st</sup> BN: "Public acceptance of renewable energy"
- 2<sup>nd</sup> BN: "Innovative financing of renewable energy"
- 3<sup>rd</sup> BN: "'INDCs beyond mitigation: TNAs as testing ground"
- 4<sup>th</sup> BN: "Harmonisation of EU renewable energy policies: The case of biomethane"
- 5<sup>th</sup> BN: "Sustainability criteria for biomass: The importance of transparency, sustainability co-benefits, and trade-offs"



✓ **Thematic Briefing Note Series: COP21**

- 1<sup>st</sup> COP21 Thematic Briefing Note: "POLIMP Guide Towards COP21 in Paris"
- ✓ **3 POLIMP Newsletters**
- ✓ **18 Press Releases**
- ✓ **6 JIQ Newsletters, 1 CEPS Newsletter**



# POLIMP Publications

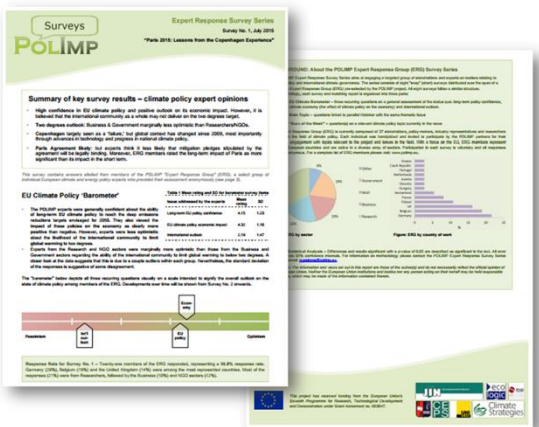
## ✓ POLIMP Climate Change Monitor Series:

- 1<sup>st</sup> (February 2014),
- 2<sup>nd</sup> (September 2014)
- 3<sup>rd</sup> Issue (September 2015)



## ✓ POLIMP Survey Series

- Survey No. 1. Paris 2015: Lessons from the Copenhagen Experience



The **POLIMP Expert Response Survey Series** engages a targeted group of stakeholders and experts on matters relating to EU and international climate and energy policy. It consists of eight “snap” surveys distributed over the span of a year to an Expert Response Group pre-selected by the POLIMP project consortium. Each survey and report is organized into three parts:

1. EU Climate ‘Barometer’ – 3 recurring questions on a general assessment of the status quo
2. Main Topic – thematic questions linked to the topic of a corresponding Webinar
3. “Buzz of the Week” – question(s) on a relevant climate policy topic currently in the news.

More information about the  
project

## Contact



### **JIN Climate and Sustainability**

Laan Corpus den Hoorn 300  
9728 JT Groningen  
The Netherlands

phone: +31 (0) 50 524 8430

email: [vlasis@jiqweb.org](mailto:vlasis@jiqweb.org)

[www.jiqweb.org](http://www.jiqweb.org)